

Strategy Overview

As of 3/31/24

Tactical growth strategy focused on capital appreciation. Invests in leading growth stocks in favorable market environments. Scales to cash to preserve gains when unfavorable market risk is high. Positions are managed through a combination of CAN SLIM® guidelines and a proprietary stock scoring system designed to build a comprehensive growth portfolio.

Primary Objective
Long-Term Growth

43%

Secondary Objective
Downside Risk Protection

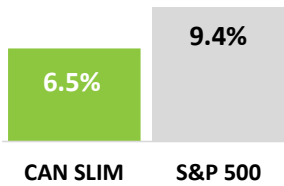


57%

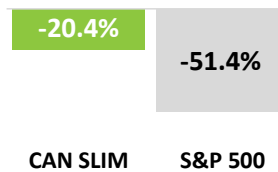
■ Cash ■ Equities

Maximize the Upside. Minimize the Downside.

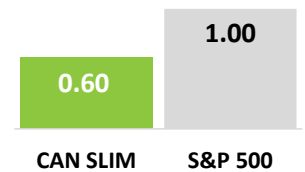
Market Participation



Less Drawdown

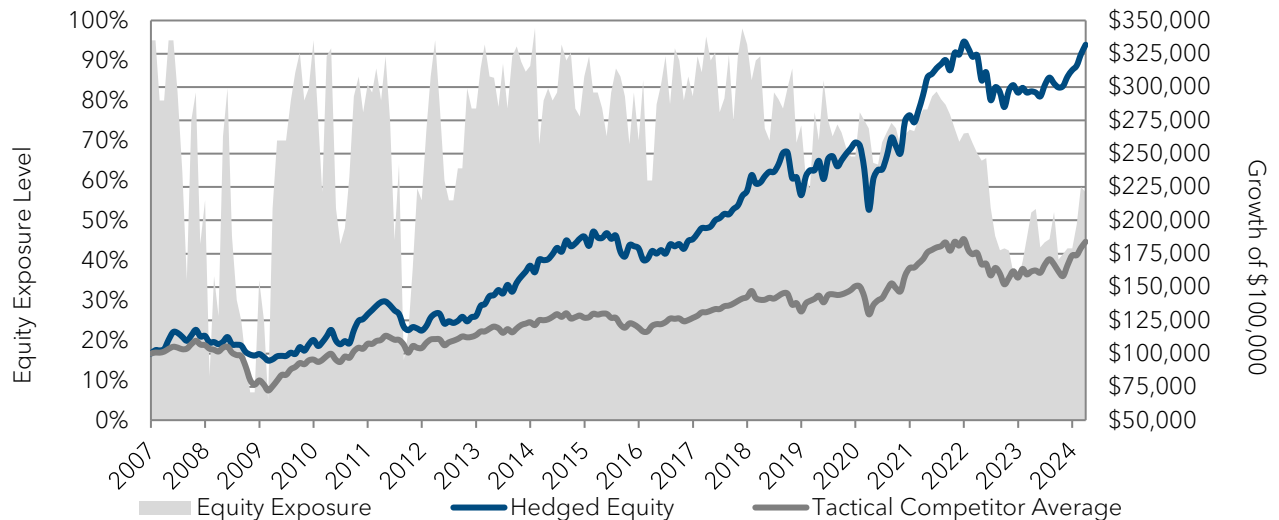


Less Risk



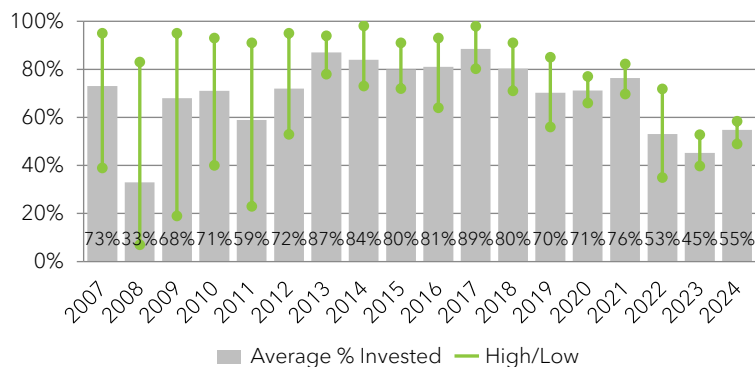
10+ Years of Market Participation

Dynamic Hedged Equity vs. Competitive Benchmarks
Hypothetical Growth of \$100,000: 1/1/2007-3/31/2024



Performance returns from 1/1/2007 – 3/31/2024. Past Performance is not indicative of future results. All investments involve risk, including loss of principal. NorthCoast Asset Management (NCAM) claims compliance with the Global Investment Performance Standards (GIPS®). GIPS® is a registered trademark of CFA Institute. CFA Institute does not endorse or promote this organization, nor does it warrant the accuracy or quality of the content contained herein. Returns are presented net-of-fees. Net-of-fee returns are reduced by trading costs and the portfolio’s actual management fee. Valuations are computed and performance is reported in U.S. dollars. A complete list of composite descriptions is available upon request. Policies for valuing portfolios, calculating performance, and preparing compliant presentations are available upon request. To obtain a compliant presentation for the associated strategy, please contact one of our advisors at 800.274.5448.

Historical Equity Exposure (Avg 69%)



Sample Holdings

Ticker	Name	Sector
Cash & Equivalents	43%	
CI	The Cigna Group	Healthcare
APH	Amphenol Corp	Technology
AMZN	Amazon, Inc	Consumer Cyclical
TMUS	T-Mobile	Communication Services
MA	MasterCard	Financial Services

Sample holdings by weight. The list above is shown for informational purposes only. It can change and is not a recommendation to buy or sell any of these securities or to allocate a portfolio in this manner.

Year-Over-Year Return (Net %)

	2007	2008	2009	2010	2011	2012	2013	2014	2015	2016	2017	2018	2019	2020	2021	2022	2023	2024 YTD	Total Return	Growth of \$100,000
Dynamic Hedged Equity	12.4	-12.8	9.7	16.6	-10.1	8.6	28.5	12.4	-5.3	3.0	18.6	-2.1	17.3	7.2	19.1	-11.9	5.2	6.0	194.9	\$294,877
Tactical Competitor Avg	6.3	-24.9	19.6	12.4	-2.9	9.3	8.5	2.7	-5.9	6.2	12.3	-7.7	14.5	9.0	13.2	-15.6	10.6	6.0	83.8	\$183,792
Aggressive Competitor Avg	7.4	-34.4	29.3	13.4	-3.4	13.4	20.9	5.6	-2.7	7.8	16.2	-7.8	21.1	11.0	16.3	-15.2	15.1	6.8	164.5	\$264,493
70/30 S&P500/Tbill	5.0	-27.1	17.9	10.3	1.3	10.6	21.3	9.0	0.7	7.9	14.7	-2.7	21.7	13.1	19.2	-12.5	19.4	7.7	229.8	\$329,821

Annualized Return (Net %)

	1-Yr	3-Yr	5-Yr	10-Yr	Since Inception 1/1/2007
Dynamic Hedged Equity	11.3	3.6	6.3	6.2	6.5
Tactical Competitor Avg	13.8	2.5	5.4	3.9	3.6
Aggressive Competitor Avg	17.8	4.9	8.1	6.6	5.8
70/30 S&P500/Tbill	21.8	8.8	11.0	9.2	7.2

Risk Metrics (Since 1/1/2007 vs. S&P 500)

Beta	R ²	Standard Deviation	Correlation	Maximum Drawdown
0.60	70.0%	11.4%	0.84	-20.4%
0.58	90.0%	9.6%	0.95	-34.1%
0.82	95.0%	13.4%	0.98	-45.2%
0.70	100.0%	11.1%	1.00	-38.7%

Important Disclosure Information

Past Performance is not indicative of future results. All investments involve risk, including loss of principal. NorthCoast Asset Management (NCAM) claims compliance with the Global Investment Performance Standards (GIPS®). GIPS® is a registered trademark of CFA Institute. CFA Institute does not endorse or promote this organization, nor does it warrant the accuracy or quality of the content contained herein. NorthCoast Asset Management is a d/b/a of, and investment advisory services are offered through, Connecticut Wealth, LLC, an investment adviser registered with the United States Securities and Exchange Commission (SEC). Registration with the SEC or any state securities authority does not imply a certain level of skill or training. More information about Connecticut can be found at www.connectuswealth.com.

Returns are presented net-of-fees. Net-of-fee returns are reduced by trading costs and the portfolio's actual management fee. Valuations are computed and performance is reported in U.S. dollars. A complete list of composite descriptions is available upon request. Policies for valuing portfolios, calculating performance, and preparing compliant presentations are available upon request. To obtain a compliant presentation for the associated strategy, please contact one of our advisors at 800.274.5448. The information contained herein has been prepared by NCAM on the basis of publicly available information, internally developed data and other third party sources believed to be reliable. This material is for informational and illustrative purposes only and should not be viewed as a recommendation or a solicitation to buy or sell any securities or investment products or to adopt any investment strategy.

The CAN SLIM® investment program is a tactical, long-term growth strategy focused on capital appreciation with a secondary objective of downside protection. The strategy invests in leading growth stocks during favorable equity environments and scales to cash to preserve gains when bear market risk is high. The strategy adheres to a flexible investment mandate that allows for allocation shifts that range between 0%-100% exposure to equities. Positions are managed (purchased and liquidated) through a combination of CAN SLIM® guidelines and a proprietary stock scoring system designed to build a comprehensive growth portfolio. CAN SLIM® is a registered trademark of O'Neil Capital Management Inc.

Benchmarks - Aggressive Competitor Avg = Morningstar Aggressive Allocation Category Average. Aggressive allocation portfolios seek to provide both capital appreciation and income by investing in three major areas: stocks, bonds, and cash. These portfolios tend to hold larger positions in stocks than moderate-allocation portfolios. These portfolios typically have 70% to 90% of assets in equities and the remainder in fixed income and cash. Tactical Competitor Avg = Morningstar Tactical Allocation Category Average. Tactical Allocation portfolios seek to provide capital appreciation and income by actively shifting allocations between asset classes. These portfolios have material shifts across equity regions and bond sectors on a frequent basis. To qualify for the Tactical Allocation category, the fund must first meet the requirements to be considered in an allocation category. Next, the fund must historically demonstrate material shifts within the primary asset classes either through a gradual shift over three years or through a series of material shifts on a quarterly basis. The cumulative asset class exposure changes must exceed 10% over the measurement period. The S&P 500 Index is used for comparison purposes as it represents a sample of the 500 leading companies in leading industries of the U.S. economy. It is generally considered a proxy for the total market. 70/30 S&P500/Tbill = 70% weighting to the S&P 500 Index and 30% weighting to the Barclays Capital 1-3 Month U.S. Treasury Bill Index. The S&P 500 Index is used for comparison purposes as it represents a sample of the 500 leading companies in leading industries of the U.S. economy. It is generally considered a proxy for the total market. The S&P 500 Index is unmanaged and not available for direct investment. The Barclays Capital 1-3 Month U.S. Treasury Bill Index includes all publicly issued zero-coupon U.S. Treasury Bills that have a remaining maturity of less than 3 months and more than 1 month, are rated investment grade, and have \$250 million or more of outstanding face value.